



Tarih : 29.04.2024 15:41:25

Tel : +905303302682

Tel : +905355287613

E-Mail : [info@sailoryachting.com](mailto:info@sailoryachting.com)

Website : [www.sailoryachting.com](http://www.sailoryachting.com)

## » DESCRIPTION

---

### --Engines

Total Power: 3100 HP

Engine 1 :

Engine Brand: MAN

Year Built: 2009

Engine Model: 1550

Engine Type: Inboard

Engine/Fuel Type: Diesel

Location: Starboard

Engine Hours: 1160

Drive Type: Stern drive

Engine Power: 1550 HP

Engine 2 :

Engine Brand: MAN

Year Built: 2009

Engine Model: 1550

Engine Type: Inboard

Engine/Fuel Type: Diesel

Location: Starboard

Engine Hours: 1160

Drive Type: Stern drive

Engine Power: 1550 HP

### --Dimensions

LOA: 23M

Beam: 5.40M

Maximum Draft: 1.6M

Displacement: 48000kg

Cruising Speed: 30 knots

Maximum Speed: 37 knots

Tanks

Fresh Water Tanks: 900 litres

Fuel Tanks: 3900 litres

--Equipment / Extras:

Autopilot System

Navigation

Air Conditioner

12V

TV

All Carpets Upgraded

The Master Closet

Sound System

Bow Sunbathing Cushions

Electric Skipper Seats

Table in Breakfast Saloon

27kw Generator(New)

Water Maker(New)

Satellite and Hydraulic System(New)

Satellite TV

Cabins

1x Master Cabin

1x VIP Cabin

1x Twin Cabin

--Dimensions

LOA: 23M

Beam: 5.40M

Maximum Draft: 1.6M

Displacement: 48000kg

Cruising Speed: 30 knots

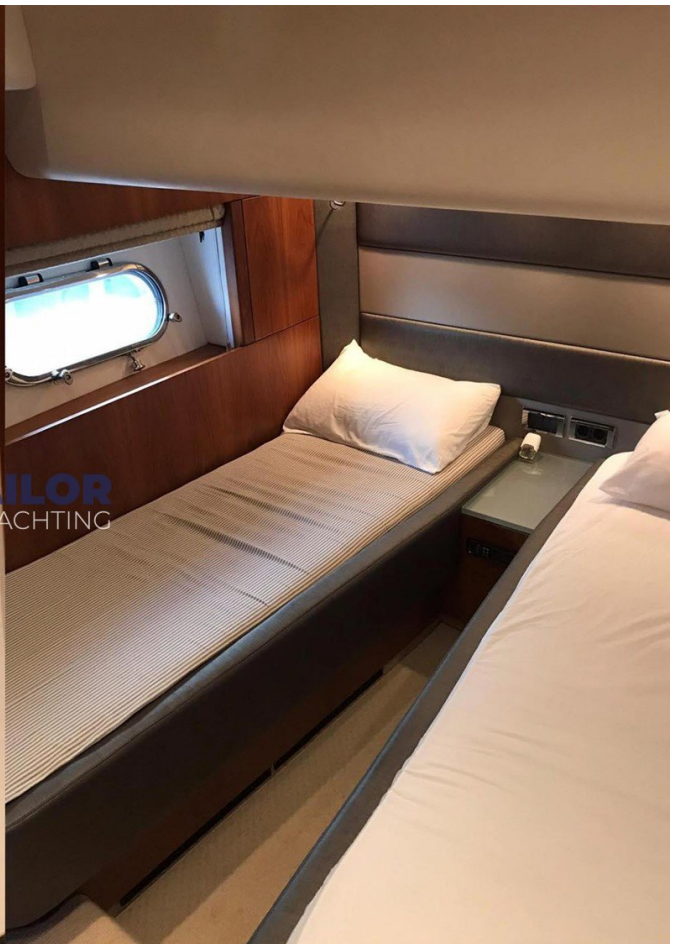
Maximum Speed: 37 knots

Tanks

Fresh Water Tanks: 900 litres

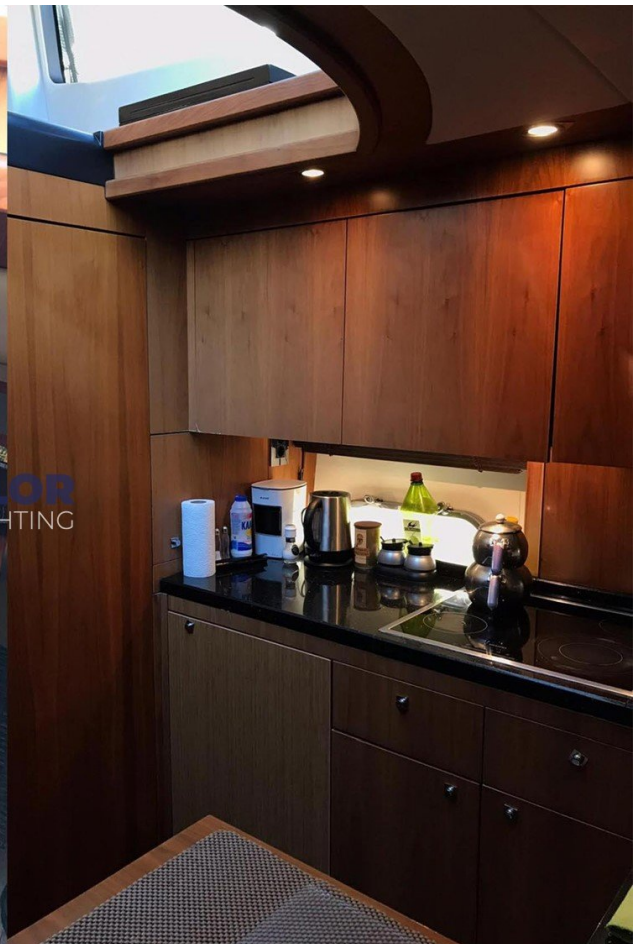
Fuel Tanks: 3900 litres













Tel : +905303302682

Tel : +905355287613

E-Mail : [info@sailoryachting.com](mailto:info@sailoryachting.com)

Website : [www.sailoryachting.com](http://www.sailoryachting.com)